

# LEADING PEOPLE *from*

The  
People  
Side

LEARNING AHEAD



**Leading People** is a dynamic 8-week leadership exploration for new leaders. Together with a group of your peers, you will explore new ways of being and working to help your team deliver results.

This program expertly weaves together online learning, guided virtual workshops, peer coaching, and on-the-job application to create an impactful learning journey that we hope shapes the way you lead people now, and for the rest of your career. Get ready to explore and climb to new heights as a leader of people. Here is a map of the journey you will be taking, beginning with Orientation.



## WEEK 1

# ORIENTATION

Complete the online module to orientate to the program and prepare for the first workshop

## WEEK 2

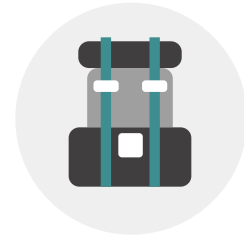


*my leadership style*

## WORKSHOP #1

- Review Program Map
- Meet Your Learning Circle
- Make Personal Connections
- Leverage DISC Insights
- Learning Circle Exercise
- Set Program Intentions

## WEEK 3



## PUTTING IT INTO PRACTICE

- Personal Growth Plan
- On-The-Job Application

## WEEK 4



*trusting people*

## WORKSHOP #2

- Mindful Moment
- Leading Teams
- Building Trust
- Giving Feedback
- Learning Circle Exercise

## WEEK 5

## PUTTING IT INTO PRACTICE

- Lead Trust Team Talk
- On-The-Job Application



**LEARNING CIRCLE  
MEET UP**



WEEK 6



*coaching people*

## WORKSHOP #3

- Mindful Moment
- What is Coaching?
- Listening for Meaning
- Asking Powerful Questions
- Learning Circle Exercise

WEEK 7



## PUTTING IT INTO PRACTICE

- Coaching Growth Plan
- On-The-Job Application

WEEK 8



*leading people*

## WORKSHOP #4

- Mindful Moment
- Courageous Conversations
- Learning Circle Exercise
- Putting It All Together

*Enjoy the journey and try to get better every day. And never lose the passion and love for what you do.*

– Nadia Comaneci

## THE SUMMIT EXPERIENCE

- Reflect On Your Journey
- Feedback Circles
- Gratitude & Recognition



Contact  
[learning@thepeopleside.com](mailto:learning@thepeopleside.com)  
with any questions



The  
People  
Side

# REGISTRATION DETAILS



Check out our upcoming schedule:

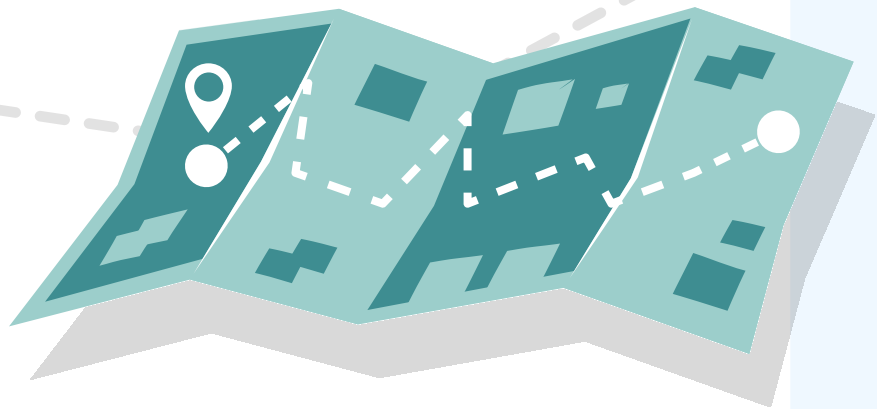
[www.thepeopleside.com/leadingpeople-registration](http://www.thepeopleside.com/leadingpeople-registration)

## TUITION: \$1995

- Price includes assessments, shipped learning materials and 32+ hours of learning
- Tuition is paid during enrollment
- Participants may pay via credit card or be invoiced

## ONCE ENROLLED...

- Leaders will receive meeting invitations to hold the (5) synchronous virtual sessions on their calendar
- Leaders will receive a "Welcome Letter" via email with instructions for completing the prework, including the DISC leadership assessment and a tour of our Adepton platform
- Leaders will receive their "Orientation Kit" in the mail with learner materials and leadership tools



For additional questions, please email: [learning@thepeopleside.com](mailto:learning@thepeopleside.com)